

New York State Prohibited and Regulated Invasive Animals

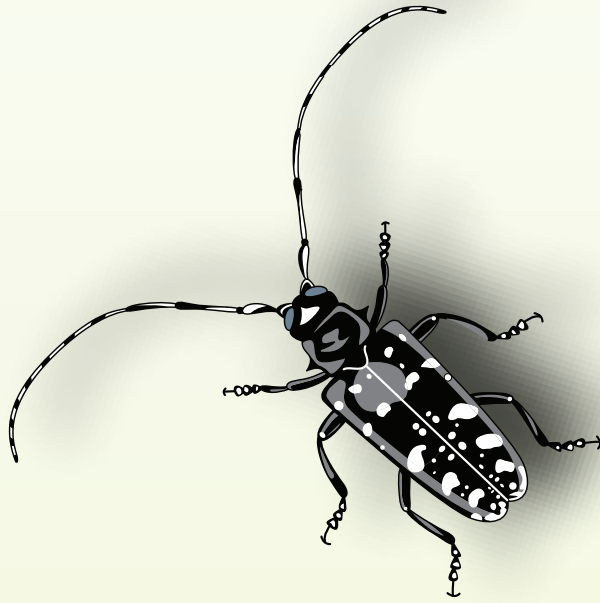
September 10, 2014



NYS DEPARTMENT OF
ENVIRONMENTAL CONSERVATION



NYS DEPARTMENT OF
AGRICULTURE AND MARKETS



Asian Longhorned Beetle *Anoplophora glabripennis*

6 NYCRR Part 575

Prohibited and Regulated Invasive Animal Species



Zebra Mussel *Dreissena polymorpha*

New York State Environmental Conservation Law
NYCRR Part 575 Prohibited and Regulated Invasive Animal Species
Questions and Answers

<http://www.dec.ny.gov/animals/99141.html>

What are invasive species?

Invasive species means a species that is nonnative to a particular ecosystem, and whose introduction causes or is likely to cause economic or environmental harm or harm to human or animal health.

How does this regulation define ‘animal?’

‘Animal’ means all vertebrate and invertebrate species, in any stage of development, including but not limited to mammals, birds, reptiles, amphibians, fish, mollusks, arthropods, insects, and their eggs, larvae or young, but excluding humans.

Why are invasive species a problem?

Invasive species can harm natural communities and systems (plants and animals found in particular physical environments) by out-competing native species, reducing biological diversity, altering community structure and, in some cases, changing ecosystems. Invasive species threaten New York’s food supply, not only agriculture but also harvested wildlife, fish and shellfish; our landscaping, parks, gardens, and pets; and our recreation resources and even animal and human health. All New Yorkers have a stake in the invasive species issue.

How will these regulations help?

These regulations will help control invasive species by reducing their introduction and spread by limiting commerce in such species. By preventing introduction of new invasive species, New York will save time, effort, and money in the future.

How were the lists included in the regulations developed?

The lists of prohibited and regulated species were developed using the species assessment and listing process outlined in the 2010 report “A Regulatory System for Non-native Species,” which can be found at <http://www.dec.ny.gov/animals/63402.html>.

When were the regulations implemented?

The final regulations (and a summary) were published in the State Register September 10, 2014. The regulations went into effect on March 10, 2015.

What is the difference between prohibited and regulated invasive species?

Prohibited invasive species cannot be knowingly possessed with the intent to sell, import, purchase, transport or introduce. In addition, no person shall sell, import, purchase, transport, introduce or propagate prohibited invasive species. *Regulated* invasive species, on the other hand, are species which cannot be knowingly introduced into a free-living state, or introduced by a means that one should have known would lead to such an introduction, although such species shall be legal to possess, sell, buy, propagate and transport.

Who will enforce the regulations?

The regulations will be enforced by the Department of Environmental Conservation, with assistance from the Department of Agriculture and Markets.

FISH

PROHIBITED



Carp, Bighead *Hypophthalmichthys nobilis*

PROHIBITED



Carp, Black *Mylopharyngodon piceus*

PROHIBITED



Carp, Largescale Silver *Hypophthalmichthys harmandi*

PROHIBITED



Carp, Silver *Hypophthalmichthys molitrix*

PROHIBITED



Goby, Round *Neogobius melanostomus*

PROHIBITED



Goby, Tubenose *Proterorhinus semilunaris (P. marmoratus)*

PROHIBITED



Mosquitofish, Eastern *Gambusia holbrooki*

PROHIBITED



Mosquitofish, Western *Gambusia affinis*

FISH

PROHIBITED



Oriental Weatherfish *Misgurnus anguillicaudatus*

PROHIBITED



Sea Lamprey *Petromyzon marinus*

PROHIBITED



Snakehead, Bullseye *Channa marulius*

PROHIBITED



Snakehead, Giant *Channa micropeltes*

PROHIBITED



Snakehead, Northern *Channa argus*

PROHIBITED



Tench *Tinca tinca*

PROHIBITED



Walking Catfish *Clarias batrachus*

FISH

REGULATED



Asian Swamp Eel *Monopterus albus*

REGULATED



Common Carp, Koi *Cyprinus carpio*

REGULATED



Goldfish *Carassius auratus*

REGULATED



Lionfish, Common *Pterois miles*

REGULATED



Lionfish, Red *Pterois volitans*

REGULATED



Red Shiner *Cyprinella lutrensis*

REGULATED



Rudd *Scardinius erythrophthalmus*

REGULATED



Ruffe *Gymnocephalus cernuus*

FISH

REGULATED



Tilapia, Blue *Oreochromis aureus*

REGULATED



Tilapia, Nile *Oreochromis niloticus*

REGULATED



Zander *Sander lucioperca (Stizostedion lucioperca)*

AQUATIC INVERTEBRATES

PROHIBITED



Asian Clam *Corbicula fluminea*

PROHIBITED



Asian Sea Squirt *Styela plicata*

PROHIBITED



Asian Shore Crab *Hemigrapsus sanguineus*

PROHIBITED



Bloody Red Shrimp *Hemimysis anomala*

PROHIBITED



Carpet Tunicate *Didemnum* spp.

PROHIBITED



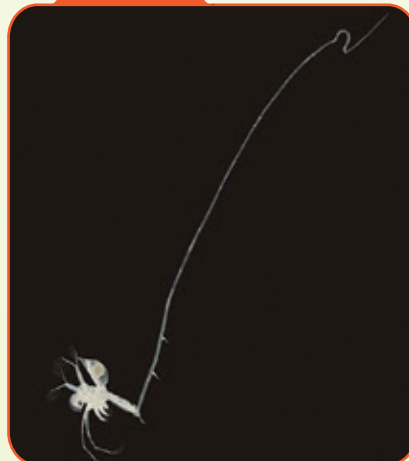
Chinese Mitten Crab *Eriocheir sinensis*

PROHIBITED



Faucet Snail *Bithynia tentaculata*

PROHIBITED



Fishhook Water Flea *Cercopagis pengoi*

PROHIBITED



Mystery Snail, Chinese
Bellamya chinensis (*Cipangopaludina chinensis*)

AQUATIC INVERTEBRATES

PROHIBITED



Mystery Snail, Japanese *Bellamya japonica*

PROHIBITED



New Zealand Mud Snail
Potamopyrgus antipodarum

PROHIBITED



Quagga Mussel
Dreissena rostriformis bugensis

PROHIBITED



Rusty Crayfish *Orconectes rusticus*

PROHIBITED



Spiny Water Flea
Bythotrephes longimanus (*B. cederstroemi*)

PROHIBITED



Suminoe Oyster *Crassostrea ariakensis*

PROHIBITED



Veined Rapa Whelk *Rapana venosa*

PROHIBITED



Zebra Mussel *Dreissena polymorpha*

AQUATIC INVERTEBRATES

REGULATED



Crab, Brush-clawed Shore, Grapsid *Hemigrapsus takanoi* (*H. penicillatus*)

REGULATED



Crab, European Green *Carcinus maenas*

REGULATED



Water Flea *Daphnia lumholtzi*

TERRESTRIAL INVERTEBRATES

PROHIBITED



Africanized Honey Bee *Apis mellifera*
scutellata x *A. mellifera ligustica*/ *A. mellifera iberiensis*

PROHIBITED



Asian and European Gypsy Moth
Lymantria dispar

PROHIBITED



Asian Earthworms *Amyntas* spp.

PROHIBITED



Asian Longhorned Beetle
Anoplophora glabripennis

PROHIBITED



Beech Scale *Cryptococcus fagisuga*

PROHIBITED



Emerald Ash Borer *Agrilus planipennis*

PROHIBITED



Giant African Land Snail
Achatina fulica (*Lissachatina fulica*)

PROHIBITED



Giant Ghana Snail *Achatina achatina*

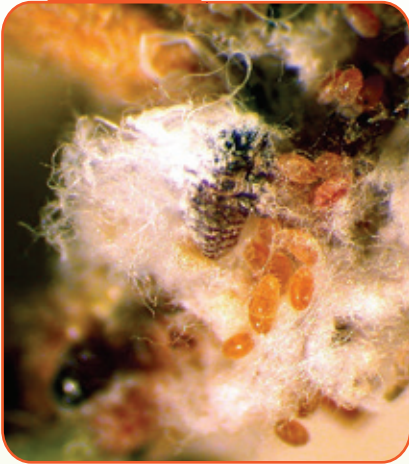
PROHIBITED



Giant West African Snail
Archachatina marginata

TERRESTRIAL INVERTEBRATES

PROHIBITED



Hemlock Woolly Adelgid *Adelges tsugae*

PROHIBITED



Japanese Pine Sawyer
Monochamus alternatus

PROHIBITED



Sirex Woodwasp *Sirex noctilio*

PROHIBITED



Walnut Twig Beetle *Pityophthorus juglandis*

TERRESTRIAL AND AQUATIC VERTEBRATES

PROHIBITED



Asian Raccoon Dog *Nyctereutes procyonoides*

PROHIBITED



Eurasian Boar
Sus scrofa (excluding *Sus scrofa domestica*)

PROHIBITED



European Hare *Lepus europaeus*

PROHIBITED



Mute Swan *Cygnus olor*

PROHIBITED



Nutria *Myocastor coypus*

TERRESTRIAL AND AQUATIC VERTEBRATES

REGULATED



African Clawed Frog *Xenopus laevis*

REGULATED



Egyptian Goose *Alopochen aegyptiacus*

REGULATED



European Rabbit *Oryctolagus cuniculus*

REGULATED



Monk Parakeet *Myiopsitta monachus*

REGULATED



Muscovy Duck *Cairina moschata*

REGULATED



Red-eared Slider *Trachemys scripta elegans*

Index by Common Name

COMMON NAME	SCIENTIFIC NAME	PAGE	COMMON NAME	SCIENTIFIC NAME	PAGE
FISH			TERRESTRIAL INVERTEBRATES		
Asian Swamp Eel	<i>Monopterus albus</i>		Africanized Honey Bee	<i>Apis mellifera scutellata</i> x <i>A. mellifera ligustica</i> / <i>A. mellifera iberiensis</i>	12
Carp, Bighead	<i>Hypophthalmichthys nobilis</i>	5	Asian and European Gypsy Moth	<i>Lymantria dispar</i>	12
Carp, Black	<i>Mylopharyngodon piceus</i>	5	Asian Earthworms	<i>Amyntas</i> spp.	12
Carp, Largescale Silver	<i>Hypophthalmichthys harmandi</i>	5	Asian Longhorned Beetle	<i>Anoplophora glabripennis</i>	12
Carp, Silver	<i>Hypophthalmichthys molitrix</i>	5	Beech Scale	<i>Cryptococcus fagisuga</i>	12
Common Carp, Koi	<i>Cyprinus carpio</i>	7	Emerald Ash Borer	<i>Agrilus planipennis</i>	12
Goby, Round	<i>Neogobius melanostomus</i>	5	Giant African Land Snail	<i>Achatina fulica</i> (<i>Lissachatina fulica</i>)	12
Goby, Tubenose	<i>Proterorhinus semilunaris</i> (<i>P. marmoratus</i>)	5	Giant Ghana Snail	<i>Achatina achatina</i>	12
Goldfish	<i>Carassius auratus</i>	7	Giant West African Snail	<i>Archachatina marginata</i>	12
Lionfish, Common	<i>Pterois miles</i>	7	Hemlock Woolly Adelgid	<i>Adelges tsugae</i>	13
Lionfish, Red	<i>Pterois volitans</i>	7	Japanese Pine Sawyer	<i>Monochamus alternatus</i>	13
Mosquitofish, Eastern	<i>Gambusia holbrooki</i>	5	Sirex Woodwasp	<i>Sirex noctilio</i>	13
Mosquitofish, Western	<i>Gambusia affinis</i>	5	Walnut Twig Beetle	<i>Pityophthorus juglandis</i>	13
Oriental Weatherfish	<i>Misgurnus anguillicaudatus</i>	6	TERRESTRIAL AND AQUATIC VERTEBRATES		
Red Shiner	<i>Cyprinella lutrensis</i>	7	African Clawed Frog	<i>Xenopus laevis</i>	15
Rudd	<i>Scardinius erythrophthalmus</i>	7	Asian Raccoon Dog	<i>Nyctereutes procyonoides</i>	14
Ruffe	<i>Gymnocephalus cernuus</i>	7	Egyptian Goose	<i>Alopochen aegyptiacus</i>	15
Sea Lamprey	<i>Petromyzon marinus</i>	6	Eurasian Boar	<i>Sus scrofa</i> (excluding <i>Sus scrofa domesticus</i>)	14
Snakehead, Bullseye	<i>Channa marulius</i>	6	European Hare	<i>Lepus europaeus</i>	14
Snakehead, Giant	<i>Channa micropeltes</i>	6	European Rabbit	<i>Oryctolagus cuniculus</i>	15
Snakehead, Northern	<i>Channa argus</i>	6	Monk Parakeet	<i>Myiopsitta monachus</i>	15
Tench	<i>Tinca tinca</i>	6	Muscovy Duck	<i>Cairina moschata</i>	15
Tilapia, Blue	<i>Oreochromis aureus</i>	8	Mute Swan	<i>Cygnus olor</i>	14
Tilapia, Nile	<i>Oreochromis niloticus</i>	8	Nutria	<i>Myocastor coypus</i>	14
Walking Catfish	<i>Clarias batrachus</i>	6	Red-eared Slider	<i>Trachemys scripta elegans</i>	15
Zander	<i>Sander lucioperca</i> (<i>Stizostedion lucioperca</i>)	8			
AQUATIC INVERTEBRATES					
Asian Clam	<i>Corbicula fluminea</i>	9			
Asian Sea Squirt	<i>Styela plicata</i>	9			
Asian Shore Crab	<i>Hemigrapsus sanguineus</i>	9			
Bloody Red Shrimp	<i>Hemimysis anomala</i>	9			
Carpet Tunicate	<i>Didemnum</i> spp.	9			
Chinese Mitten Crab	<i>Eriocheir sinensis</i>	9			
Crab, Brush-clawed Shore, Grapsid	<i>Hemigrapsus takanoi</i> (<i>H. penicillatus</i>)	11			
Crab, European Green	<i>Carcinus maenas</i>	11			
Faucet Snail	<i>Bithynia tentaculata</i>	9			
Fishhook Water Flea	<i>Cercopagis pengoi</i>	9			
Mystery Snail, Chinese	<i>Bellamya chinensis</i> (<i>Cipangopaludina chinensis</i>)	9			
Mystery Snail, Japanese	<i>Bellamya japonica</i>	10			
New Zealand Mud Snail	<i>Potamopyrgus antipodarum</i>	10			
Quagga Mussel	<i>Dreissena rostriformis bugensis</i>	10			
Rusty Crayfish	<i>Orconectes rusticus</i>	10			
Spiny Water Flea	<i>Bythotrephese longimanus</i> (<i>B. cederstroemi</i>)	10			
Suminoe Oyster	<i>Crassostrea ariakensis</i>	10			
Veined Rapa Whelk	<i>Rapana venosa</i>	10			
Water Flea	<i>Daphnia lumholtzi</i>	11			
Zebra Mussel	<i>Dreissena polymorpha</i>	10			

Index by Scientific Name

SCIENTIFIC NAME	COMMON NAME	PAGE	SCIENTIFIC NAME	COMMON NAME	PAGE
FISH			TERRESTRIAL INVERTEBRATES		
<i>Carassius auratus</i>	Goldfish	7	<i>Achatina achatina</i>	Giant Ghana Snail	12
<i>Channa argus</i>	Snakehead, Northern	6	<i>Achatina fulica</i>	Giant African Land Snail	12
<i>Channa marulius</i>	Snakehead, Bullseye	6	<i>(Lissachatina fulica)</i>		
<i>Channa micropeltes</i>	Snakehead, Giant	6	<i>Adelges tsugae</i>	Hemlock Woolly Adelgid	13
<i>Clarias batrachus</i>	Walking Catfish	6	<i>Agrilus planipennis</i>	Emerald Ash Borer	12
<i>Cyprinus carpio</i>	Common Carp, Koi	7	<i>Amyntas spp.</i>	Asian Earthworms	12
<i>Cyprinella lutrensis</i>	Red Shiner	7	<i>Anoplophora glabripennis</i>	Asian Longhorned Beetle	12
<i>Gambusia affinis</i>	Mosquitofish, Western	5	<i>Apis mellifera scutellata x</i>	Africanized Honey Bee	12
<i>Gambusia holbrooki</i>	Mosquitofish, Eastern	5	<i>A. mellifera ligustica/</i>		
<i>Gymnocephalus cernuus</i>	Ruffe	7	<i>A. mellifera iberiensis</i>		
<i>Hypophthalmichthys harmandi</i>	Carp, Largescale Silver	5	<i>Archachatina marginata</i>	Giant West African Snail	12
<i>Hypophthalmichthys molitrix</i>	Carp, Silver	5	<i>Cryptococcus fagisuga</i>	Beech Scale	12
<i>Hypophthalmichthys nobilis</i>	Carp, Bighead	5	<i>Lymantria dispar</i>	Asian and European Gypsy Moth	12
<i>Misgurnus anguillicaudatus</i>	Oriental Weatherfish	6			
<i>Monopterus albus</i>	Asian Swamp Eel	5	<i>Monochamus alternatus</i>	Japanese Pine Sawyer	13
<i>Mylopharyngodon piceus</i>	Carp, Black	5	<i>Pityophthorus juglandis</i>	Walnut Twig Beetle	13
<i>Neogobius melanostomus</i>	Goby, Round	5	<i>Sirex noctilio</i>	Sirex Woodwasp	13
<i>Oreochromis aureus</i>	Tilapia, Blue	8			
<i>Oreochromis niloticus</i>	Tilapia, Nile	8	TERRESTRIAL AND AQUATIC VERTEBRATES		
<i>Petromyzon marinus</i>	Sea Lamprey	6	<i>Alopochen aegyptiacus</i>	Egyptian Goose	15
<i>Proterorhinus semilunaris</i>	Goby, Tubenose	5	<i>Cairina moschata</i>	Muscovy Duck	15
<i>(P. marmoratus)</i>			<i>Cygnus olor</i>	Mute Swan	14
<i>Pterois miles</i>	Lionfish, Common	7	<i>Lepus europaeus</i>	European Hare	14
<i>Pterois volitans</i>	Lionfish, Red	7	<i>Myiopsitta monachus</i>	Monk Parakeet	15
<i>Sander lucioperca</i>	Zander	8	<i>Myocastor coypus</i>	Nutria	14
<i>(Stizostedion lucioperca)</i>			<i>Nyctereutes procyonoides</i>	Asian Raccoon Dog	14
<i>Scardinius erythrophthalmus</i>	Rudd	7	<i>Oryctolagus cuniculus</i>	European Rabbit	15
<i>Tinca tinca</i>	Tench	6	<i>Sus scrofa</i>	Eurasian Boar	14
			<i>(excluding Sus scrofa domesticus)</i>		
AQUATIC INVERTEBRATE			<i>Trachemys scripta elegans</i>	Red-eared Slider	15
<i>Bellamyia chinensis</i>	Mystery Snail, Chinese	9	<i>Xenopus laevis</i>	African Clawed Frog	15
<i>(Cipangopaludina chinensis)</i>					
<i>Bellamyia japonica</i>	Mystery Snail, Japanese	10			
<i>Bithynia tentaculata</i>	Faucet Snail	9			
<i>Bythotrephes longimanus</i>	Spiny Water Flea	10			
<i>(B. cederstroemi)</i>					
<i>Carcinus maenas</i>	Crab, European Green	11			
<i>Cercopagis pengoi</i>	Fishhook Water Flea	9			
<i>Corbicula fluminea</i>	Asian Clam	9			
<i>Crassostrea ariakensis</i>	Suminoe Oyster	10			
<i>Daphnia lumholtzi</i>	Water Flea	11			
<i>Didemnum spp.</i>	Carpet Tunicate	9			
<i>Dreissena polymorpha</i>	Zebra Mussel	10			
<i>Dreissena rostriformis bugensis</i>	Quagga Mussel	10			
<i>Eriocheir sinensis</i>	Chinese Mitten Crab	9			
<i>Hemigrapsus sanguineus</i>	Asian Shore Crab	9			
<i>Hemigrapsus takanoi</i>	Crab, Brush-clawed Shore, Grapsid	11			
<i>(H. penicillatus)</i>					
<i>Hemimysis anomala</i>	Bloody Red Shrimp	9			
<i>Orconectes rusticus</i>	Rusty Crayfish	10			
<i>Potamopyrgus antipodarum</i>	New Zealand Mud Snail	10			
<i>Rapana venosa</i>	Veined Rapa Whelk	10			
<i>Styela plicata</i>	Asian Sea Squirt	9			

Photo Credits

COVER: Asian Carp: *Jim Weber*, Memphis StarTribune, Bugwood.org; **European hare:** *Stawomir Skowronek*, slawomirskowronek foto-kurier; **Emerald Ash Borer:** *David Cappaert*, Michigan State University, Bugwood.org; **Sea Lamprey mouth:** *T. Lawrence*, Great Lakes Fishery Commission

Page 3: Zebra Mussel: ???

FISH, PROHIBITED: **Carp, Bighead:** *Dezidor*, licensed under Creative Commons via Wikimedia Commons; **Carp, Black:** *Christoph Wimmer* at rekordfische.at; **Carp, Largescale Silver:** Department of Fisheries and Allied Aquacultures, Auburn University; **Carp, Silver:** *Magicity*, licensed under Public Domain via Wikimedia Commons; **Goby, Round:** *Dave Jude*, University of Michigan; **Goby, Tubenose:** *Yuriy Kvach*, Creative Commons; **Mosquitofish, Eastern:** *Chris Appleby*, US Geological Survey; **Mosquitofish, Western:** *NOZO*, Wikimedia.org; **Oriental Weatherfish:** New York Department of Environmental Conservation Archive; **Sea Lamprey:** large photo - *C. Krueger*, Great Lakes Fishery Commission, inset - *T. Lawrence*, Great Lakes Fishery Commission; **Snakehead, Bullseye:** *Ianaré Sevé*, licensed under Public Domain via Wikimedia Commons; **Snakehead, Giant:** *George Chernilevsky*, licensed under Public Domain via Wikimedia Commons; **Snakehead, Northern:** *OpenCage*, licensed under Creative Commons; **Tench:** *Karelj*, licensed under Public Domain via Wikimedia Commons; **Walking Catfish:** *Wibowo Djatmika*, licensed under the Creative Commons. **FISH, REGULATED:** **Asian Swamp Eel:** U.S. Department of the Interior, U.S. Geological Survey; **Common Carp, Koi:** *Gunther Schmida License*: CC BY Attribution-Noncommercial-ShareAlike 3.0; **Goldfish:** *Thomas Uland*, North American Native Fish Association; **Lionfish, Common:** *Alexander Vasenin*, Wikimedia Commons; **Lionfish, Red:** *Alexander Vasenin*, Wikimedia Commons; **Red Shiner:** *Marine discovery*, GNU Free Documentation License; **Rudd:** *Xomenka*, Creative Commons Attribution-Share Alike 3.0; **Ruffe:** *Tiit Hunt*, Wikimedia Commons; **Tilapia, Blue:** *Chad Thomas*, Texas State University-San Marcos; **Tilapia, Nile:** *Bjørn Christian Tørrissen*, Wikimedia Commons; **Zander:** *Gösta Sundman: Suomen Kalat* (Kansalliskirjasto, The National Library of Finland),

AQUATIC INVERTEBRATES, PROHIBITED: **Asian Clam:** Crown Copyright 2009 - GB Non-Native Species Secretariat; **Asian Sea Squirt:** *Rosana M. Rocha*, Universidade Federal do Paraná (UFPR), Brazil; **Asian Shore Crab:** *Brigham Whitman*, Clark University, 2004; **Bloody Red Shrimp:** National Oceanic and Atmospheric Administration; **Carpet Tunicate:** MIT Sea Grant; **Chinese Mitten Crab:** CA Dept of Fish and Game, National Exotic Marine and Estuarine Species Information System; **Faucet Snail:** The freshwater gastropods of North America, www.fwgna.org; **Fishhook Water Flea:** *Igor Grigorovich*, University of Windsor; **Mystery Snail, Chinese:** Oregon Department of Fish & Wildlife, Licensed under public domain at Wikipedia; **Mystery Snail, Japanese:** The freshwater gastropods of North America. www.fwgna.org; **New Zealand Mud Snail:** *Michal Mañas*, Wikimedia Commons; **Quagga Mussel: ???;** **Rusty Crayfish:** *Casey Swecker*, Marshall University; **Spiny Water Flea:** *Kate Feil*, http://nas.er.usgs.gov; **Suminoe Oyster:** Virginia Institute of Marine Science; **Veined Rapa Whelk: ???;** **Zebra Mussel:** Scott Camazine, NY Sea Grant. **AQUATIC INVERTEBRATES, REGULATED:** **Crab, Brush-clawed Shore, Grapsid:** *Hans Hillewaert*, Creative Commons Attribution-Share Alike 4.0 International; **Crab, European Green: ???;** **Water Flea:** *Jerry Evans*, Centextnaturalist.com.

TERRESTRIAL INVERTEBRATES, PROHIBITED: **Africanized Honey Bee:** *Jeffrey W. Lotz*, Florida Department of Agriculture and Consumer Services, Bugwood.org; **Asian and European Gypsy Moth:** large photo - Swedish University of Agricultural Sciences, Wikimedia Commons, inset - *Entomart.be*, Wikimedia Commons; **Asian Earthworms:** *Thomas Brown*, Creative Commons at Wikimedia; **Asian Longhorned Beetle:** *Kenneth R. Law*, USDA APHIS PPQ, Bugwood.org; **Beech Scale:** *Joseph O'Brien*, USDA Forest Service, Bugwood.org; **Emerald Ash Borer:** *David Cappaert*, Michigan State University, Bugwood.org; **Giant African Land Snail:** *Andrew Derksen*, FDACS/DPI, Bugwood.org; **Giant Ghana Snail:** *Schneckenmama* at German Wikipedia; **Giant West African Snail:** *Yuri Yashin*, achatina.ru, Bugwood.org; **Hemlock Woolly Adelgid:** *Michael Montgomery*, USDA Forest Service, Bugwood.org; **Japanese Pine Sawyer:** *Jijing Song and Juan Shi*, Beijing Forestry University, Bugwood.org; **Sirex Woodwasp:** *Steven Valley*, Oregon Department of Agriculture, Bugwood.org; **Walnut Twig Beetle:** *Whitney Cranshaw*, Colorado State University, Bugwood.org.

TERRESTRIAL AND AQUATIC VERTEBRATES, PROHIBITED: **Asian Raccoon Dog:** *Jpogi*, on Wikipedia Commons; **European Boar:** The Nature Conservancy Archive, The Nature Conservancy, Bugwood.org; **European Hare:** *Ostnov*, Panoramio.com; **Mute Swan:** *Meghan O'Neill McDonald*; **Nutria:** *Philippe Amelant*, Wikimedia Commons. **TERRESTRIAL AND AQUATIC VERTEBRATES, REGULATED:** **African Clawed Frog:** *Brian Gratwicke*, Wikimedia Commons via Creative Commons; **Egyptian Goose:** *Andreas Trepte*, Creative Commons; **European Rabbit:** *JJ Harrison*, Wikimedia Commons; **Monk Parakeet:** *Stephanie Sanchez*, Bugwood.org; **Muscovy Duck:** *Gerard Hogervorst*, Wikimedia Commons, **Red-eared Slider:** *Greg Hume*, Wikimedia Commons.





This publication was prepared for the NYS Department of Environmental Conservation by the Cornell University Cooperative Extension Invasive Species Program. This publication, the Cornell University Cooperative Extension Invasive Species Program, and the NY Invasive Species Clearinghouse are supported by the NYS Environmental Protection Fund through a contract with the NYS Department of Environmental Conservation.



Cornell University
Cooperative Extension

Cornell Cooperative Extension is an equal opportunity, affirmative action educator and employer.

© Cornell University, June 22, 2015